

Leading edge new technology.  
3 x 'flat' innovations greatly shorten the body length



Vector control technology for precise and optimal BL motor performance

High-performance microcomputer and our proprietary algorithms constantly sense the operation. Motor speed and power are optimally controlled in real time.

Note: The body housing color is shown in red to distinguish inside parts visually. The actual housing color is in black.

**Cordless Impact Driver EY1PD1**



**Bit storage space provided**

Two 65 mm bits can be stored in the base of the drill (one each on left and right).

Specifications

Chuck	One touch bit lock system (6.35mm (1/4") Hex)			
Maximum Torque (forward / reverse)	{18V} High Mode : 155 Nm, Medium Mode : 120 Nm, Low Mode :40 Nm {14.4V} High Mode : 140 Nm, Medium Mode : 120 Nm, Low Mode :40 Nm			
Speed at no load	High Mode: 0 - 2,700 rpm, Medium Mode: 0 - 1,600 rpm, Low Mode: 0 - 1,000 rpm, Tek Mode: 0 - 2,700 rpm			
Impacts per minute	High Mode: 0 - 4,100 ipm, Medium Mode: 0 - 3,100 ipm, Low Mode: 0 - 2,100 ipm, Tek Mode: 0 - 2,100 ipm			
Dimensions & weight	18V / 5.0Ah (EY9L54) : L 98 x H 243 x D 59 mm / 1.5 kg    18V / 3.0Ah (EY9L53) : L 98 x H 227 x D 59 mm / 1.3 kg			
Capacity (approx. with full charge)	Screwing / Drilling	Wood Screws in Yellow Pine (ø4.2 mm x 75 mm)	18V 5.0Ah: 550 screws	18V 3.0Ah: 330 screws
		Self-Drilling Screws in SPC (ø4 mm x 13 mm t=1.6 mm)	1,100 screws	660 screws
		DL core (ø21, Plaster Board 12.5mm + Plywood 12.5mm)	150 holes	100 holes
		Soft concrete hole (ø3.5x30mm, Mortar)	570 screws	340 screws

Model#	EY9HX500 Eccentric attachment	EY9HX501 Right-angle attachment
Chuck	One touch bit lock system (6.35mm (1/4") Hex)	
Center height	13mm	18mm
Head height	—	53mm
Mounting angle	8 directions (45 degree increments)	
Dimensions & weight	Total length 97mm 290g	Total length 103mm 250g
	Wood Screws in Yellow Pine/ø3.5-ø6.8	
Working range	Self-Drilling Screws in SPC (t=1.6mm)/ø3.5-ø6	
	—	Wood drill, Particle board (t=20mm)/-ø35
—	Woodworking hole saw, Particle board (t=20mm)/-ø36	

Optional accessory



EY9HX500  
Eccentric attachment



EY9HX501  
Right-angle attachment

Accessories

	Model#	EY1PD1J18D	EY1PD1N18D	EY1PD1XT	EY1PD1X
Universal charger (Li-ion10.8 - 28.8V)	EY0L82	●	●	○	○
	EY9L54	●×2	○	○	○
Battery pack 18V	5.0Ah (LJ type)	●	○	○	○
	3.0Ah (PN type)	○	●×2	○	○
Eccentric attachment	EY9HX500	○	○	○	○
Right-angle attachment	EY9HX501	○	○	○	○
Tool case	TOOLBOX2DD	●	●	●	○

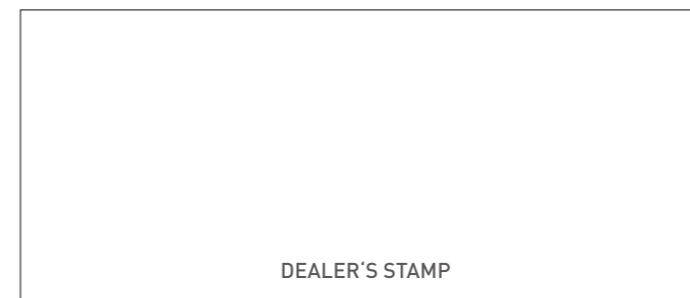
●: Standard accessory ○: Optional accessory

**Panasonic®**

Panasonic Power Tools  
Panasonic UK  
Maxis 2, Western Road,  
Bracknell, Berkshire  
RG12 1RT  
United Kingdom

Produced in Japan 07/2022  
© 2022 Panasonic Electric Works Europe AG

[www.panasonic-powertools.eu](http://www.panasonic-powertools.eu)



**Panasonic Electric Works Europe AG**

The design and specification of products are constantly changing in the interest of improvement. Whilst every care has been taken in preparation of this catalogue, some changes may not have been indicated and may have occurred after publication. Please check with your Panasonic dealer for details. Panasonic Electric Works Europe AG cannot accept responsibility for any errors and omissions.

**Panasonic**

Cordless Impact Driver  
**EY1PD1**

**Access All Areas!**  
High Power Impact Tightening - even in tight areas.

*New*

Right-angle attachment



*New*

Eccentric attachment

# A masterpiece of design and technology - Our most versatile impact driver ever!



Extremely short body  
**98 mm**

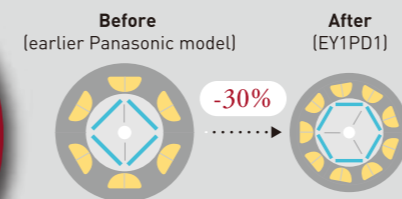
Light weight  
**1.5 kg**  
(with 5.0Ah battery pack)

Full-scale photo  
(EY1PD1 with 18V 5.0Ah battery pack)

## New Technology

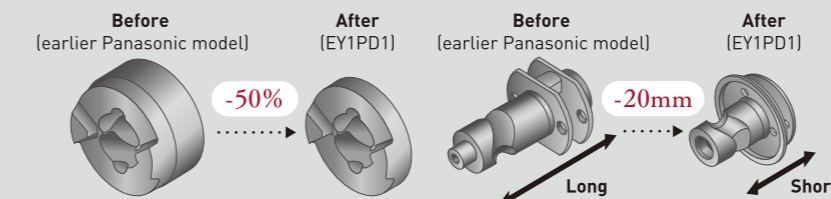
### Short body – 3 x ‘flat’ technologies

#### High-density compact brushless motor



A unique motor structure allows 30% size reduction when compared to previous models. However, even in this much smaller size, high power output is maintained by improving torque and rotation speed.

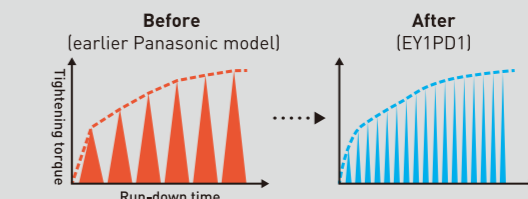
#### Extremely short impacting structure



The downsized hammer (50% reduction in volume) and more efficient shaft parts layout (20mm reduction in length) materialized shorter impacting structure.

### Smooth easy operation

#### Less blow shock in impact mechanism



By sensing real-time tightening load with vector control circuit, the motor rotation and each hammer blow is optimized to achieve smooth and easy tool operation.

#### Minimized bit wobbling



The internal tolerance of the bit holder was tightened to reduce bit rattling.

## Convenient Feature



#### Impact torque and speed selection

As pushing **(←→)** button, the tool is changed into High, Medium, Slow and Tek **(H M S E)**. Select optimal mode in application. (Tek mode : same speed as High with less impacts to avoid screw head chipping)

- : push twice to LED light on
- : keep pushing to check battery level mode.



#### New easy one-touch bit locking system

Just push bits to install. No need to pull quick chuck sleeve. This system is also applicable for attachments.

\*Note : to remove bits/attachments, pull sleeve or release button.

## Tight-Spot Operation

### Tight - distance

**Extremely short body length 98 mm !**  
Squeeze into tight spots, such as narrow distance between studs, thanks to extremely short body length.



Note : Attach front protection cover when not in-use with attachments for heat/dust protection.



### Tight - corner

**Minimal center height 13 mm !**  
Easy and straight approach in tight corners, such as ceiling, wall, floor, interior furniture, or kitchen shelves.



Select best angle from eight positions for the application.



### Tight - angle

**Small right-angle head 36 mm x 53 mm !**  
Get into complex design structure with right-angle. Impact mechanism helps you to manage tool easier even in angled off-in-line screwing.



Select best angle from eight positions for the application.

